

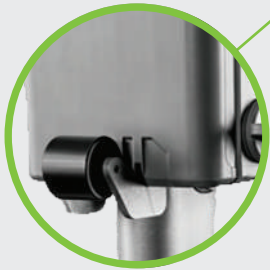
LITHIUM BATTERY HYDRAULIC JACK



► EJ30-2ELS / EJ40-2ELS

► **Cordless Power**

Convenient, energy-efficient power for use anywhere



► **Anti Collision Wheel**
for Battery Pack protection

► **Elliptical Handle**

Stunning design with built-in connecting rod.

► **Multiple Adaptors**

Choose from two sizes to suit any situation

► **Industrial Seals**

High quality seal for maximum performance

► **Dual Safety Valve System**

Slow descent control and overload protection ensure safe, stable lifting



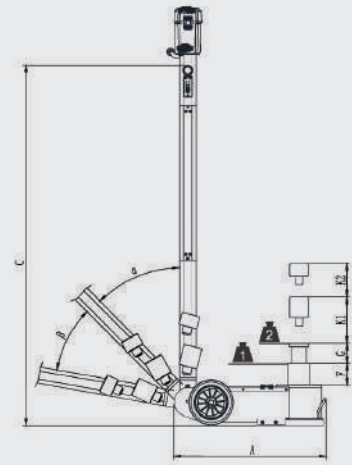
MODEL	EJ30-2ELS	EJ40-2ELS
Rated Voltage	36V	36V
Battery Qty	2pcs	2pcs
Capacity	▲ 30t/▲ 15t	▲ 40t/▲ 20t
Net Weight	40kg	46.5kg
Gross Weight	43kg	49kg
Packing Size	607x317x341mm	607x317x341mm

EJ30-2ELS

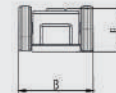
A 22.55 in
B 10.63 in
C 59.88 in
E 5.91 in
F 3.07 in
G 2.75 in
K1 2.95 in
K2 1.77 in
 α 45°
 β 35°

EJ40-2ELS

A 22.91 in
B 10.63 in
C 60 in
E 5.91 in
F 3.0 in
G 2.75 in
K1 2.95 in
K2 1.77 in
 α 45°
 β 35°



► **LED Lamp**
Locate lifting point with ease.



► **Dual Speed Piston Rod**

Fast rapid extension or Slow precise positioning.

► **Hard Chrome-Plated Cylinder:**

Enhanced durability and corrosion resistance for long service life

